

Everybody grieves in their own way. Understanding the different feelings and thoughts that you will experience can help make your grieving process easier. Some of our team are trained in pet bereavement support if you're struggling to cope or just need someone to talk to. Visit our website for details of counsellors or call one of the support lines below.

Blue Cross Pet Bereavement Support Service
0800 096 6606



Cats Protection - Paws to Listen Grief Support Service
0800 024 94 94



Rainbow Bridge - Helping A Child With Pet Loss
www.rainbowsbridge.com



The Ralph Site - Pet Loss Support
www.theralphsite.com



Animal Samaritans Grief Helpline
Call: 0203 745 9859
www.animalsamaritans.org.uk



The Ease Animal Charity - Free Resources
www.ease-animals.org.uk



www.whatsyourgrief.com



www.thegoodgrieftrust.org



www.youtube.com/@griefchannel

www.dignitypetcrem.co.uk | 01252 844572

GROWING AROUND GRIEF

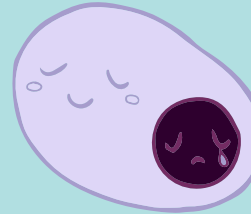
HERE IS A NEW WAY OF THINKING ABOUT GRIEF AND RECOVERY:



THIS CIRCLE REPRESENTS A LIFE THAT IS TOTALLY CONSUMED BY GRIEF



ONE SHOULD ACCEPT THAT THE GRIEF WILL NEVER ENTIRELY DISAPPEAR, BUT OVER TIME IT WILL BECOME A SMALLER, MORE MANAGEABLE PART OF LIFE



EVEN THOUGH THE GRIEF IS STILL THERE, A NEW LIFE EXPANDS AROUND IT: ONE IS ABLE TO GROW AROUND GRIEF

THE DIGNITY PROMISE

To treat your pet with the utmost care and respect.



To cremate your pet individually.



The ashes you receive are only those of your pet.



To personalise the service for you.

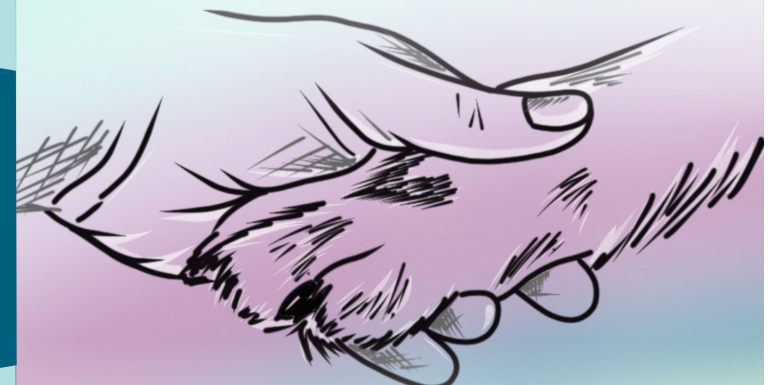


WE'RE COMMITTED TO SERVICE EXCELLENCE

At Dignity we strive to give you a caring, respectful and personalised service. It would mean a lot to us if you could take the time to leave some feedback via the links on our website to independent review sites. Alternatively, give our Facebook page a Like and leave a review, photo and tribute to your pet on there.



www.dignitypetcrem.co.uk | 01252 844572



PAWS FOR THOUGHT

Thank you for choosing Dignity to look after your pet. In this guide we give you pet bereavement support resources and helpful advice on scattering or burying your pet's ashes, with further information on ways to remember your pet.

www.dignitypetcrem.co.uk | 01252 844572

DID YOU KNOW

Plants can be damaged by ashes as they have a very high pH level. To avoid this, mix them with soil or peat to create a better growing environment.

HAVING YOUR ASHES AT DIGNITY

Reserving a plot within our gardens is simple, please call us to make an appointment to visit and choose an area. There are a variety of options available including formal flower beds and natural areas.

Please note the human ashes scattering service is only for clients of Dignity Pet Crematorium; visit our website for more information.

SCATTERING YOUR PET'S ASHES

Scattering the ashes of your pet is a highly personal experience. Here are some ideas to consider:

- Scatter your pet's ashes in a public place such as a favourite walk.
- Choose a special spot in the garden and mark it with a plant or memorial pebble.
- Have your pet's ashes scattered in the Garden of Remembrance at Dignity.
- Avoid scattering on a windy day and keep the wind to your back, with everyone else standing upwind.
- If scattering in a popular location, choose a quieter time to do so for privacy.
- If raking into a flower bed, keep the container close to the ground.
- If scattering on a beach, make a trench near the water's edge and fill with the cremated remains. As the tide comes in the waves will gently take them out to sea.
- Avoid scattering on land where animals are grazing.



www.dignitypetcrem.co.uk | 01252 844572

BURYING YOUR PET'S ASHES

Many people choose to bury their pet's ashes in their garden as a way of keeping them close. Choose a sunny spot, away from the house, in a position where you can look out of your window and remember them with love.

Even if you've initially decided to keep your pet's ashes at home, you are welcome to have them interred in our Garden of Remembrance at any time in the future.

Once you have chosen the spot, dig a hole that is deep enough to house the casket or urn with at least 6 inches of soil between the top of the urn and ground level.

Alternatively, take your pet's ashes out of the container and bury them directly in the ground. This is the fastest way to naturally return their ashes to earth. However, if you intend on moving in the future, we would recommend you inter your pet's ashes into a Polished Metal Urn wrapped in plastic to prevent them from biodegrading.

If you do not wish to inter their ashes directly into the ground, an alternative is to place them into a large garden tub that can be moved at a later date. You may want to plant a Blooming Remembrance Heart in the tub where wild flowers will grow, giving remembrance to your loved one.



DID YOU KNOW

Most human cemeteries and crematoriums are not approved for scattering or burial of pet ashes. Contact us about having your own ashes buried alongside your pet at Dignity.

www.dignitypetcrem.co.uk | 01252 844572

REMEMBERING YOUR PET

Finding a personal way to say goodbye and honour your pet is important for your emotional health and well-being, especially for children. When the time feels right, think of the ways you can preserve their memory. Planning a memorial service, drawing a picture of your pet or setting up a special memory spot may give you or a child an outlet for expressing your grief. Here are a few suggestions.

- Plant a tree, shrub or flower in their memory.
- Place a charity wall plaque in Dignity's Remembrance Walkway.
- Create a photo book or fill a memory box with keepsakes and special photos of your pet.



Turn their paw or nose print into a beautiful piece of jewellery.

- Give something back by donating to a charity in their memory.
- Leave a tribute to your pet on our Facebook page.
- Create an entry for them in our Book of Remembrance.



Place a personalised marker or stone in your garden to create a special memorialised area.

PLEASE VISIT OUR WEBSITE FOR FURTHER DETAILS OR TO PLACE AN ORDER

www.dignitypetcrem.co.uk | 01252 844572